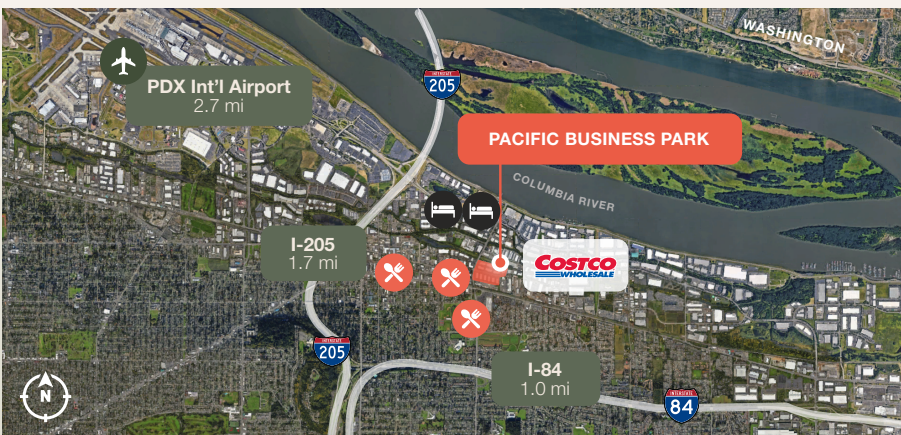


INDUSTRIAL/WAREHOUSE  
FOR LEASE

# Pacific Business Park

12207 NE Marx Street, Portland, OR 97230  
Building 7



## Key Features



3,660 sq. ft. shell



1,803 sq. ft. office



1 grade door

---

14' clear height

---

Corner space

---

2.7 miles to Portland  
International Airport

---

Convenient access to  
I-205 & I-84

---

Available June 2025

---

Lease Rate (NNN):

\$0.90/sq. ft. shell

\$1.10/sq. ft. office

**Jake Bigby**

jakeb@pactrust.com

**Caitlin Knecht**

caitlink@pactrust.com

503.624.6300

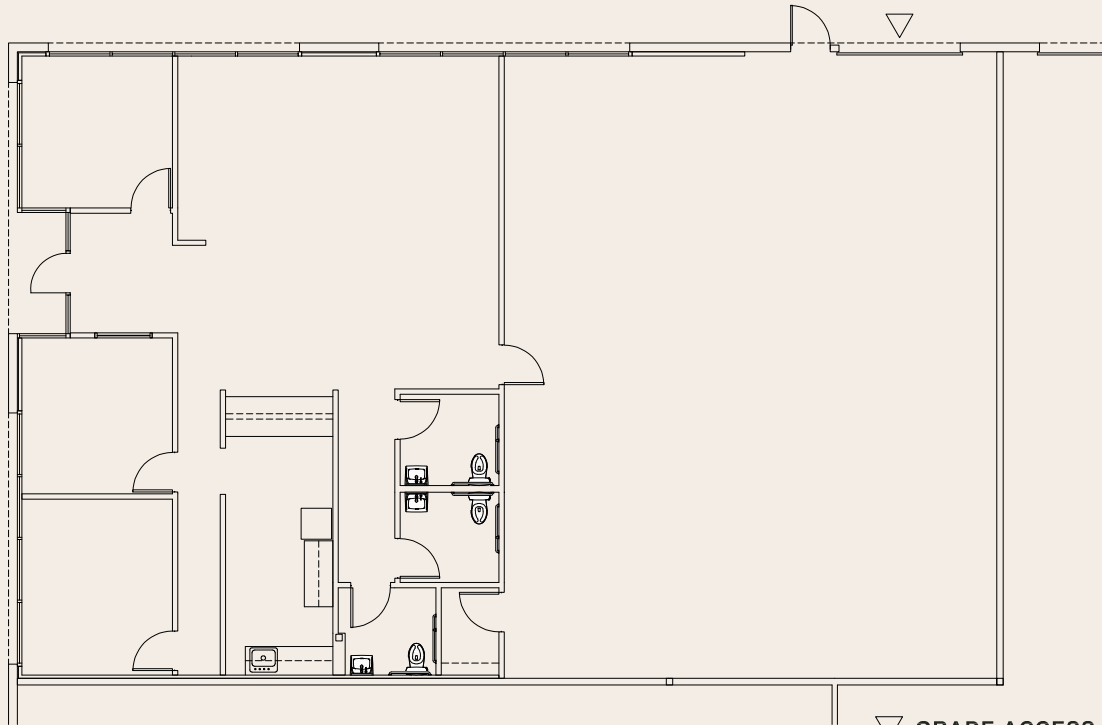
Owned & Managed by

**PACTRUST**

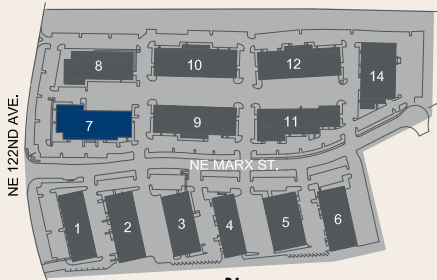
# Space Plan

12207 NE Marx Street, Portland, OR 97230

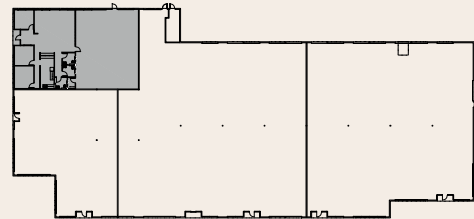
3,660 Sq. Ft.



▽ GRADE ACCESS  
▼ DOCK ACCESS



PACIFIC BUSINESS PARK  
Portland, OR 97230



**BUILDING PLAN**

**Jake Bigby**  
jakeb@pactrust.com

**Caitlin Knecht**  
caitlink@pactrust.com

503.624.6300  
www.PacTrust.com